

three of a kind

This multigenerational residence brings its occupants together while allowing them to maintain their individual lifestyles.

Text by Sasha Gonzales
Photography by Marc Tey



The three wings envelope a central courtyard and pool.

Designed to house a large family (comprising a mother, her two daughters and their families), the Triptych is a single, landed, detached dwelling made up of three wings – each one dedicated to the requirements of its occupants. The strategically arranged blocks are arranged in a triangular layout, enveloping a central courtyard. Together, these spaces form one congruous whole.

“The clients’ emphasis on a multigenerational home was the main criterion shaping the functionality of the house,” says Michelle Ho, lead architect at the Singapore-based K2LD Architects, which steered the project. “Each wing was designed to offer privacy, but

the home also incorporates communal areas to encourage interaction and foster bonding between the family members.”

same, but different

From the outside, the three wings look almost identical. Ho and her team employed a harmonious palette of materials and a consistent design language to establish a coherent visual identity. However, each wing differs in volume and boasts its own unique features which were tailored to meet the needs of its respective occupants.

The main wing, for example, was designed as a “central hub” for major events and gatherings. It has



The home receives plenty of natural light.

(Below) *The water feature in the third wing is adorned by a specially commissioned teardrop-shaped sculpture.*

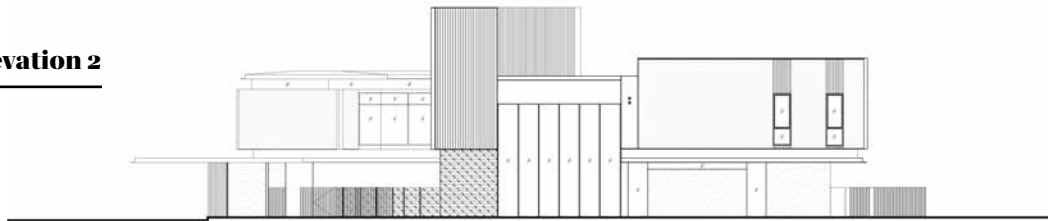


residential

elevation 1



elevation 2



elevation 3



elevation 4



project name

The Triptych

location

Singapore

site area (exterior)

2662.8 sqm

year of completion

2022

architect/design firm

K2LD Architects Pte Ltd

lead architect

Ben Teng, Leong Lai Ping,
Michelle Ho, Peangporn
Khantee (Pang)

contractor/builder

Huat Builders Pte Ltd
Stema Furniture &
Renovation Pte Ltd

M&E consultant

Allz Consulting Services

quantity surveyor

WS Surveyorship Pte Ltd

two dining rooms – an elegant formal one for hosting guests and a more casual family one for day-to-day use. Additionally, it has a double volume foyer which is accentuated by a skylight at the main entrance. As all the common areas are deemed to belong to the main wing, this wing is the largest. It also has three bedrooms – a master bedroom and two guest rooms.

The second wing houses a master bedroom and a guest room. A bespoke, seven-metre-tall bookshelf, crafted from blackened stainless steel and dark timber,

is the main feature in the loft-like, double-storey living room. This towering piece complements the tall windows while adding a touch of sophistication and giving the room a distinct personality. The second wing also includes a bath area for the family's pet.

The third wing has a master bedroom and a children's room, as well as a tranquil water feature beside the living room; the water feature is adorned by a specially commissioned teardrop-shaped sculpture. "The client's affinity for the calming sound of flowing water inspired us



The central courtyard seamlessly extends down to the basement via an elliptical void.



Michelle Ho

Lead Architect, K2LD
Architects Pte Ltd

to create a custom waterspout detail, which allows the water to flow gracefully along the water feature,” Ho adds.

“To further enhance the connection between the wing and the outdoors, we designed large-span, full-height windows that can be fully opened, blurring the boundary between the living room and the water feature. This design element provides an immersive experience, allowing the occupants to feel intimately connected to their surrounding natural environment,” she notes.

privacy. please

Ho and her team adopted a range of design measures to ensure privacy for the occupants in each wing. For starters, architectural screens, consisting of both fixed and movable elements, were strategically employed to enable the selective filtering of views as needed. On the ground level, where common spaces like living rooms and dining rooms predominate, the views are directed towards the central courtyard, fostering a sense of shared space.

“We situated more private areas, like the bedrooms,

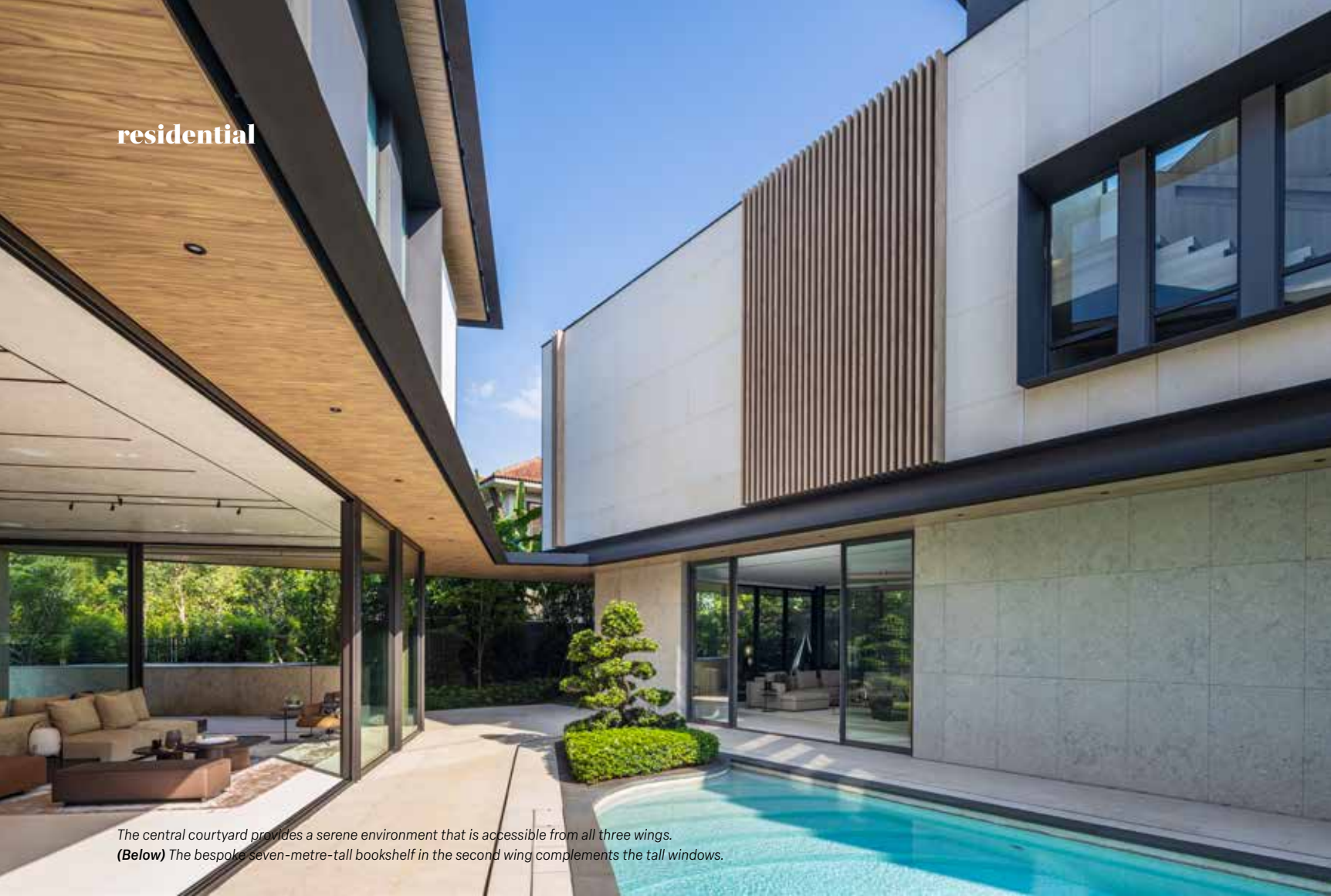
on the second storey,” Ho continues. “This deliberate placement orients the views in these spaces towards the peripheral landscaping surrounding the boundary of the house.”

Due to the fact that the residence sits near a major arterial road and that an existing pedestrian overhead bridge directly overlooks the plot, the clients emphasised the need for extra privacy through lush landscaping around the building perimeter.

“Careful planning and provisions were thus essential to introduce old, mature trees that were both tall and lush,” Ho says. The project team worked with the landscaper to reserve mature trees about a year before the project was completed in 2023, so that they could be seamlessly integrated into the surroundings.

By carefully considering the location of the private and communal spaces and incorporating adaptable screens and greenery, Ho says that her team managed to create a harmonious living environment where the families could enjoy shared moments as well as individual retreats within the same proximity.

residential



*The central courtyard provides a serene environment that is accessible from all three wings.
(Below) The bespoke seven-metre-tall bookshelf in the second wing complements the tall windows.*



together as one

The central courtyard features a swimming pool and greenery, providing a serene environment that is accessible from all three wings, thanks to the expansive, full-height glass sliding doors that open towards this central focal point.

Ho notes that the central courtyard seamlessly extends down to the basement via an elliptical void. The basement includes a pebble garden with green elements and serves as a continuation of shared spaces, offering a wellness area with a gym, a spa and an entertainment room, all thoughtfully arranged around the central void.

As the central courtyard was envisioned as a tranquil oasis connecting the ground level with the basement, tall trees were strategically planted in the basement pebble garden. The trees punctuate the void and emerge above the first storey to amplify the greenery in the courtyard.

The central courtyard and other exterior spaces were carefully planned to extend the living experience beyond the confines of the house. Ho says that these spaces provide opportunities for relaxation, recreation, and connection with nature, contributing to an overall sense of well-being for the families.

unique materials lend character

Most of the materials used in the project were sourced internationally. For instance, the Grigio Alpi limestone, used for the façade, was obtained from Italy. Ho says that this material is celebrated for its soft finish and

possesses distinctive characteristics that come from the natural materials and macrofossils embedded within its layers. “To accentuate the visual and tactile richness of textures, we adopted the use of this same stone in various finishes.”

“The majority of the façade showcases a honed finish, providing a smooth and refined appearance. In contrast, the main feature wall at the front of the main block uses a rough ribbed finish, introducing a dynamic textural element that adds depth and visual interest to the overall design,” she adds.

overcoming challenges

The location of the site, by a major arterial road, posed a notable challenge, according to Ho. In addition to the 12m building setback as stipulated by the URA (Urban Redevelopment Authority), the façade design incorporated minimal fenestrations facing the major arterial road.

To address the need for natural light within the rooms while ensuring privacy, Ho’s team elevated the roof and introduced frosted clerestory windows. She explains that this design gesture not only allowed for the infusion of natural light into the home but also created a “floating” appearance for the roof, enhancing the overall aesthetic appeal of the building.

The end result, Ho says, is an inviting, natural light-filled home that strikes the perfect balance between individuality and cohesiveness and that takes a unique approach to multigenerational living.

The majority of the façade showcases a honed finish for a smooth and refined appearance.

